

Özyeğin University

**ISO 14064-1 Institutional Greenhouse
Gas Inventory Report**

Reporting Period: 2025

Prepared in compliance with ISO 14064-1, Section 9.3.1

Prepared By: Sustainability & QHSE

Date: April 20, 2026

TABLE OF CONTENTS

TABLE OF CONTENTS	2
EXECUTIVE SUMMARY	3
INTRODUCTION	4
1. ABOUT THE REPORT	7
1.1 PURPOSE OF THE REPORT	7
1.2 CATEGORIES	7
1.3 REPORTING IN ACCORDANCE WITH ISO 14064-1.....	8
1.4 RESPONSIBLE PARTIES.....	9
2. METHODOLOGY	10
2.1 GREENHOUSE GAS INVENTORY BOUNDARIES	10
2.1.1 ORGANIZATIONAL BOUNDARIES.....	10
2.1.2 REPORTING BOUNDARIES	11
2.2 EMISSION FACTORS AND OTHER VALUES USED IN CALCULATIONS	15
2.3 TIER CONCEPT	15
2.4 GREENHOUSE GAS EMISSIONS CALCULATION METHODOLOGY	16
3. GREENHOUSE GAS EMISSION INVENTORY	17
3.1 REPORTING PERIOD RESULTS.....	17
3.2 YEAR-ON-YEAR EMISSION TREND ANALYSIS	19
4. UNCERTAINTIES	20
INVENTORY UNCERTAINTIES.....	20
5. GREENHOUSE GAS MITIGATION MEASURES	24
6. ANNEXES	25
ANNEX 1 - LOWER HEATING VALUES USED IN THE CALCULATIONS.....	25
ANNEX 2 – GLOBAL WARMING POTENTIAL VALUES	26
ATTACHMENT 3 - EMISSION FACTORS.....	27
ANNEX 4 – 2025 LOCATION-BASED GREENHOUSE GAS EMISSIONS INVENTORY	30
ANNEX 5 – 2025 ACTIVITY-BASED GREENHOUSE GAS EMISSIONS INVENTORY.....	31

EXECUTIVE SUMMARY

This report presents the annual Greenhouse Gas (GHG) Emissions Inventory for Özyeğin University. Throughout this document, the term “emissions” refers to greenhouse gas emissions. The inventory provides a complete and accurate quantification of the GHG emissions directly attributable to the University’s operations within the declared organizational boundaries and reporting categories for the specified reporting period.

The reporting processes and emission classifications presented in this report are aligned with internationally recognized protocols and standards. The report has been prepared in accordance with the requirements of Section 9.3.1 of the International Organization for Standardization (ISO) 14064-1 standard. Where applicable, optional disclosures have been included in line with Section 9.3.2 of the same standard. The inventory has also been prepared in accordance with the *GHG Protocol: Corporate Accounting and Reporting Standard*.

To enable year-over-year comparability of greenhouse gas emissions, 2018 was selected as the Base Year.

For 2025, Özyeğin University’s total greenhouse gas emissions amounted to 13,017.548 tCO₂e. The distribution of reporting-year emissions by category is presented in the table below.

Emissions (tCO ₂ e)	Category 1	Category 2	Category 3	Category 4	Category 5	Category 6	Total	Offsetting
2025 Emissions	9,327.547 tons	4.412 tons	678.397 tons	1,361.608 tons	1,645.584 ton	0 ton	13,017.548 tons	13,017.548 tons

INTRODUCTION

Climate change is among the most significant challenges facing nations, governments, corporations, and individuals today and in the years ahead. Its impacts affect both human and natural systems and may lead to substantial changes in resource use, production patterns, and economic activities. In response, international, regional, national, and local initiatives are being developed and implemented to limit greenhouse gas concentrations in the global atmosphere. Such GHG mitigation initiatives rely on the quantification, monitoring, reporting, and verification of greenhouse gas emissions and/or removals in accordance with the ISO 14064 framework.

ISO 14064-1 specifies the principles and requirements at the organizational level for the quantification, reporting, and reduction of greenhouse gas emissions and removals. It includes requirements for the design, development, management, reporting, and verification of an organization's GHG inventory and serves as a framework for greenhouse gas mitigation and reduction activities.

About Özyeğin University

Founded in 2007 by the Hüsni M. Özyeğin Foundation, Özyeğin University is an entrepreneurial research university focused on global impact, student development, and academic excellence. The University offers 23 undergraduate, 36 master's, and 10 doctoral programs across 7 faculties and 3 graduate schools. Through its ambitious graduate programs and dynamic academic community that fosters innovative and interdisciplinary collaboration, the University aims to strengthen its research capabilities and expand its rapidly growing research output.

Özyeğin University conducts its operations in compliance with the ISO Management System Standards and is certified under ISO 9001 Quality Management, ISO 14001 Environmental Management, ISO 45001 Occupational Health and Safety Management, ISO 50001 Energy Management, and ISO 46001 Water Efficiency Management Systems.

Özyeğin University Environment, Energy and Water Efficiency Policy

Purpose

At Özyeğin University, we are committed to adopting a holistic approach to environmental, energy, and water management in order to ensure environmental protection across the campus, improve energy and water efficiency, and promote the sustainable use of natural resources. In alignment with the University's sustainability vision, this policy is firmly grounded in an integrated management systems approach that supports the reduction of environmental impacts, the efficient use of resources, and the continuous improvement of environmental performance. This policy embraces the "reduce, replace or reuse" approach for the efficient use of water. The policy also aims to contribute to the University's broader vision: "Creating value, being recognized, preferred, and emulated as an entrepreneurial research university with scientific, social, and economic global impact."

Goals

Across all its operations, Özyeğin University is dedicated to enhancing its energy and water efficiency, minimizing its environmental impact, and ensuring the sustainable use of resources. The systematic monitoring, measurement, analysis, and evaluation of on-campus energy and water consumption constitute a core institutional practice. Based on these data, water efficiency indicators and basic water efficiency indicators are established, performance goals are identified, and continuous improvement initiatives are scheduled. Reducing greenhouse gas emissions, ensuring energy supply security, and protecting water resources are among the

University's key priorities. To achieve these goals, the University encourages the transformation of consumption habits and the adoption of new approaches based on circular economy principles. Environmental goals also include the segregation of waste at source, waste reduction, reuse, and increasing recycling rates. Promoting a culture of sustainable living across the entire campus community is also an integral component of these goals.

Core Principles

Özyeğin University adopts an integrated approach to environmental, energy, and water management in alignment with sustainability principles. The responsible and efficient use of natural resources forms the foundation of all institutional management practices. Energy and water efficiency are treated as key priorities to minimize environmental impact and optimize resource consumption across the campus. To that end, the systematic monitoring and analysis of consumption patterns, together with the planning of continuous improvement measures, constitute key institutional principles. Waste management is a fundamental component of the University's environmental policy. In alignment with the Zero Waste approach, we prioritize improving waste segregation at source, waste reduction, reuse, and recycling rates to promote not only environmental sustainability but also operational efficiency. As a university, we are committed to taking all necessary measures to protect the environment, prevent pollution, and support the sustainability of biodiversity and ecosystems. At the same time, we develop policies that contribute to combating climate change and promote the use of innovative, low-impact, and sustainable technologies. Özyeğin University is dedicated to evaluating opportunities to enhance water efficiency performance in the design of new buildings, equipment, systems, and processes. In addition, for the procurement of services, products, and equipment with significant impacts on water consumption, suppliers are assessed based on their water efficiency performance, and appropriate procurement specifications are defined to support efficient water use. All of these practices are implemented in full compliance with applicable national and international environmental legislation and regulatory obligations. Regular review and continuous improvement of environmental performance constitute core principles of the University's management approach.

Implementation Principles

Özyeğin University is committed to implementing and continuously improving its ISO 14001, ISO 50001, and ISO 46001 management systems for effective environmental, energy, and water management. The applicability and effectiveness of these systems are regularly evaluated and supported through systematic improvements. Energy and water consumption is monitored, measured, and analyzed on a regular basis. Based on the outcomes of these processes, performance goals are determined, and these goals are achieved through technical improvements, operational controls, and strategies that foster behavioral change. Hazardous and non-hazardous wastes are managed in accordance with effective legislation. Waste management practices are standardized across the campus and continuously monitored to ensure compliance and efficiency. In line with circular economy principles, the reuse and recycling of resources are actively supported. Risks and opportunities related to environmental, energy, and water efficiency management are periodically reviewed. To achieve the University's sustainability goals, necessary resources are allocated, comprehensive training is provided to all stakeholders, and active participation is encouraged. This policy applies to all campus areas and facilities, including academic buildings, dormitories, laboratories, social and recreational spaces, green areas, and infrastructure systems.

Responsibilities

The **President's Office** provides leadership for the environmental, energy, and water management systems and ensures the fulfillment of the commitments set forth in this policy, as well as the applicability, continuity, and effectiveness of these systems.

The **Sustainability & QHSE Directorate** is responsible for the establishment, implementation, monitoring, and continuous improvement of the management systems.

Operational units take the necessary measures to reduce the environmental impact of their activities and to achieve the goals and objectives outlined in this policy.

Academic and administrative staff support practices that improve energy and water efficiency within their areas of responsibility and contribute to raising environmental awareness across the University. All personnel are expected to be aware of the purposes and goals of the University's water efficiency policy and management system, as well as their individual roles in achieving these goals.

Students play an active role in fostering a culture of sustainable living and are encouraged to adopt individual behaviors that support energy and water conservation.

Other external stakeholders, including businesses, suppliers, and visitors, are responsible for acting in alignment with the University's environmental, energy, and water management policies and for contributing to these processes.

1. ABOUT THE REPORT

1.1 PURPOSE OF THE REPORT

In order to gain a competitive advantage in the market, organizations must identify their impacts on climate change, follow both national and international policies on climate change, and proactively manage greenhouse gas (GHG) risks. Organizations that fail to calculate their greenhouse gas emissions, identify associated risks, and implement appropriate risk management strategies may face future regulatory and legal sanctions as legislation evolves. Such developments are expected to have significant implications for both organizational and financial performance.

This report has been prepared for Özyeğin University in line with the following objectives:

- To quantify the impact of its operations on climate change
- To ensure preparedness for current and future legal requirements
- To identify high-risk and critical areas in carbon management
- To report greenhouse gas emissions in accordance with ISO 14064-1
- To contribute to the development of a Corporate Carbon Management Plan
- To raise employee awareness on climate change, energy efficiency, and sustainability
- To monitor progress towards the Environmental Sustainability Goals defined under the Strategic Plan

The expected benefits of this study for Özyeğin University are outlined below.

Internal Benefits:

- Increased transparency regarding resource consumption, emissions, and energy use
- Identification of emission reduction opportunities
- Enhanced institutional awareness
- Establishment of a strong foundation for a GHG Management Plan
- Strengthening of the University's sustainability vision

External Benefits:

- Reinforcement of the University's sustainability vision and strengthening of its environmental identity
- Positioning the University as a sector leader through such initiatives

1.2 CATEGORIES

The term "category" is used in ISO 14064-1:2018 to define boundaries between different types of direct and indirect greenhouse gas emissions:

Category 1 refers to direct greenhouse gas emissions from the reporting organization;

Category 2 refers to indirect greenhouse gas emissions from the consumption of purchased electricity, steam, heat, or cooling;

Category 3 refers to indirect emissions associated with transportation activities;

Category 4 refers to emissions from purchased goods and services;

Category 5 refers to emissions associated with the use of sold products, including emissions occurring throughout the life cycle stages after the product leaves the reporting organization;

Category 6 refers to other indirect emissions that cannot be classified under any of the above categories.

This report has been prepared in accordance with the principles established by the International Organization for Standardization (ISO) for the calculation and reporting of greenhouse gas emissions (ISO 14064-1:2018).

1.3 REPORTING IN ACCORDANCE WITH ISO 14064-1

The ISO 14064-1 standard provides detailed principles and requirements for the design, development, management, and reporting of an institution's or organization's Greenhouse Gas (GHG) inventory. The standard establishes requirements for defining GHG boundaries, quantifying an organization's greenhouse gas emissions, identifying reduction measures, and formulating recommendations tailored to specific organizational activities in order to improve greenhouse gas management. It also includes requirements and guidance related to inventory analysis, quality management, reporting, internal audits, and organizational responsibilities for verification activities.

The ISO 14064 standard provides a systematic approach to greenhouse gas management. The ISO 14064 series consists of three parts, each addressing a distinct scope:

ISO 14064-1 specifies principles and requirements for the quantification and reporting of greenhouse gas emissions and removals at the organizational level.

ISO 14064-2 specifies principles and requirements and provides guidance at the project level for the quantification, monitoring and reporting of activities specifically designed to reduce GHG emissions or enhance GHG removals.

ISO 14064-3 specifies principles and requirements for the validation and verification of greenhouse gas assertions.

The benefits of ISO 14064-1 for organizations can be summarized as follows:

- Supporting verification bodies in validating and verifying greenhouse gas emissions using standardized approaches and principles
- Providing organizations with information to strategically manage and reduce greenhouse gas emissions
- Facilitating the development and implementation of greenhouse gas reduction projects
- Providing necessary information to enable participation in voluntary carbon markets
- Demonstrating consistency, transparency, and credibility in the quantification, monitoring, reporting, and reduction of greenhouse gas emissions
- Strengthening trust-based relationships with stakeholders

The principles of greenhouse gas accounting and reporting under ISO 14064-1 form the foundation for ensuring that GHG-related information is determined in a fair, accurate and consistent manner. The core ISO principles are as follows:

- 1. Relevance:** Selecting appropriate greenhouse gas sources, sinks, reservoirs, data, and methodologies that meet the needs of intended users.
- 2. Completeness:** Including all relevant greenhouse gas emissions and removals.
- 3. Consistency:** Enabling meaningful comparison of greenhouse gas information over time.
- 4. Accuracy:** Minimizing systematic errors and uncertainties as far as possible.
- 5. Transparency:** Disclosing sufficient and appropriate information to allow intended users to make informed decisions with confidence.

1.4 RESPONSIBLE PARTIES

The following individuals have been involved at every stage of the preparation of this report and have been responsible for coordinating the reporting of the institutional carbon footprint calculations in accordance with ISO 14064-1, as a result of the operational activities of Özyeğin University. Under their guidance, the data provided by Özyeğin University were used in the calculations and such data are fully based on documented and verified information.

Responsible Party	Business Unit	Telephone	Email
Deniz Eren	Sustainability&QHSE	0 (549) 235 93 56	deniz.eren@ozyegin.edu.tr
Meral Işık	Sustainability&QHSE	0 (532) 303 62 94	meral.isik@ozyegin.edu.tr
Erdi Tüzün	Sustainability&QHSE	0 (549) 806 16 58	erdi.tuzun@ozyegin.edu.tr
Buğra Bora Cavuldak	Technical Services	0 (530) 878 61 75	bugrabora.cavuldak@ozyegin.edu.tr
Buğra Kürşat Öztürk	Technical Services	0 (545) 311 45 60	kursat.ozturk@ozyegin.edu.tr
Recep Uzal	Technical Services	0 (532) 466 85 46	recep.uzal@ozyegin.edu.tr
Emrah Kaplan	Purchasing	0 (530) 961 85 37	emrah.kaplan@ozyegin.edu.tr
Naki Ünal	Transportation	0 (532) 462 81 55	naki.unal@ozyegin.edu.tr
Doğukan Hasgöl	Technical Services	0 (549) 810 87 48	dogukan.hasgul@ozyegin.edu.tr
Turgut Ekinci	Administrative Services	0 (536) 668 06 01	turgut.ekinci@ozyegin.edu.tr
Hasan Büyükkaya	Administrative Services	0 (555) 179 44 51	hasan.buyukkaya@ozyegin.edu.tr
Ersin Gül	Security	0 (553) 803 50 15	ersin.gul.tepesavunma@ozyegin.edu.tr
Halil Aydemir	Accommodation Services	0 (549) 827 74 17	halil.aydemir@ozyegin.edu.tr

2. METHODOLOGY

2.1 GREENHOUSE GAS INVENTORY BOUNDARIES

2.1.1 ORGANIZATIONAL BOUNDARIES

Özyeğin University has adopted the **Operational Control Approach** for the calculation of greenhouse gas emissions.

CONTROL APPROACH

Under the control approach, an organization accounts for 100% of the greenhouse gas emissions arising from operations over which it has control. Emissions from operations in which the organization owns equity but does not exercise control are not included in the inventory. Control may be defined as either financial or operational.

Financial Control: A parent organization is considered to have financial control over a subsidiary if it has the authority to direct the financial and business policies of the subsidiary with the objective of obtaining economic benefits from its activities.

Operational Control: A parent organization is considered to have operational control if it has the authority to establish the operational policies and procedures of the subsidiary.

The legal entities and/or facilities included within the scope of this report are summarized in the table below:

Legal Entity / Facility Name	Equity Share (%)	Financial Control	Operational Control
Özyeğin University	100%	100%	100%

2.1.2 REPORTING BOUNDARIES

Özyeğin University has identified and documented greenhouse gas emissions and removals associated with its activities and established the relevant reporting boundaries.

A detailed classification of the University's operations and the corresponding emission categories is presented below.

CATEGORY 1 – DIRECT GREENHOUSE GAS EMISSIONS AND REMOVALS:

Direct greenhouse gas emissions originate from sources that are owned or controlled by the organization. Direct emissions are classified as follows:

- **Stationary Combustion** (boilers, furnaces, turbines, heaters, etc.)
- **Mobile Combustion** (automobiles, etc.)
- **Process Emissions** (emissions resulting from chemical production processes in owned or controlled process equipment)
- **Fugitive Emissions** (leaks from equipment connections, cooling towers, refrigerants used in air conditioning systems, fire extinguishers, etc.)

For Özyeğin University, direct emission sources and activities are defined as follows:

Emission Source / Activity	Detail	Data Source
Category 1 – Direct / Non-Combustion Direct Emissions / Fire Extinguishers	CO2	Technical Services
Category 1 – Direct / Non-Combustion Direct Emissions / Space Cooling / Cooling Systems / Water Dispensers	R134-A	Technical Services
Category 1 – Direct / Non-Combustion Direct Emissions / Space Cooling / Cooling Systems / Air Conditioning Units	R-401A	Technical Services
Category 1 – Direct / Non-Combustion Direct Emissions / Space Cooling / Cooling Systems / Chillers	R134-A	Technical Services
Category 1 – Direct / Non-Combustion Direct Emissions / Space Cooling / Cooling Systems / Industrial Cold Rooms	R134-A	Technical Services
Category 1 – Direct / Non-Combustion Direct Emissions / Space Cooling / Cooling Systems / Refrigerators	R-600A	Technical Services
Category 1 – Direct / Mobile Combustion / Company Vehicles	Gasoline	Invoices indicating purchased gasoline quantities
Category 1 – Direct / Mobile Combustion / Company Vehicles	Diesel	Invoices indicating purchased diesel quantities
Category 1 – Direct / Stationary Combustion / Energy Generation / Cogeneration-Trigeneration / Hot Water Generation	Natural Gas	Technical Services
Category 1 – Direct / Stationary Combustion / Energy Generation / Cogeneration-Trigeneration / Electricity Generation	Natural Gas	Technical Services
Category 1 – Direct / Stationary Combustion / Other Combustion	Diesel	Technical Services
Category 1 – Direct / Stationary Combustion / Space Heating	Natural Gas	Technical Services

CATEGORY 2 – INDIRECT EMISSIONS FROM PURCHASED ENERGY:

Category 2 emissions include greenhouse gas emissions generated during the production of purchased and consumed electricity, heat, or steam.

For Özyeğin University, indirect greenhouse gas sources and activities related to purchased energy are defined as follows:

Emission Source / Activity	Detail	Data Source
Category 2 – Indirect / Purchased Energy / Electricity Consumption / Self-Generation	Renewable Energy Sources	Amount of electricity generated from on-campus renewable energy sources
Category 2 – Indirect / Purchased Energy / Electricity Consumption	Purchased Electricity	Technical Services

CATEGORY 3 – INDIRECT TRANSPORTATION EMISSIONS:

Category 3 emissions arise from the organization’s transportation-related activities but originate from sources that are not owned or controlled by the organization.

For Özyeğin University, indirect greenhouse gas sources and transportation-related activities are defined as follows:

Emission Source / Activity	Detail	Data Source
Category 3 – Indirect / Transportation / Upstream Transportation and Distribution / Land Transportation / Road Transportation / Light-Duty Trucks / Average (up to 3.5 tons)	Diesel	Purchasing
Category 3 – Indirect / Transportation / Upstream Transportation and Distribution / Air Transportation	Cargo Flights	Purchasing
Category 3 – Indirect / Transportation / Employee Commuting / Land Transportation / Road Transportation / Minibuses / Midi-Buses / Buses	Shuttles	Transportation
Category 3 – Indirect / Transportation / Employee Commuting / Land Transportation / Road Transportation / Minibuses / Midi-Buses / Buses	Coaches (Inter-City Buses)	Transportation
Category 3 – Indirect / Transportation / Employee Commuting / Land Transportation / Road Transportation / Automobiles / By Market Segment / Lower Medium Class (C-Segment)	Diesel	Transportation
Category 3 – Indirect / Transportation / Business Travel / Accommodation / Hotel Stays	Türkiye	Purchasing
Category 3 – Indirect / Transportation / Business Travel / Air Transportation / Commercial Flights	Economy Class	Purchasing

CATEGORY 4 – INDIRECT EMISSIONS FROM PRODUCTS USED BY THE ORGANIZATION

Category 4 emissions arise from activities associated with the goods and services used by the organization; however, these emissions originate from sources that are not owned or controlled by the organization.

For Özyeğin University, indirect greenhouse gas sources and activities associated with products and services used by the University are defined as follows:

Emission Source / Activity	Detail	Data Source
Category 4 – Indirect / Products Used by the Organization / Capital Goods / Purchased Products / Purchased Goods	Institutional Furniture Manufacturing	Purchasing
Category 4 – Indirect / Products Used by the Organization / Capital Goods / Purchased Products / Purchased Goods	Major Household Appliance Manufacturing	Purchasing
Category 4 – Indirect / Products Used by the Organization / Capital Goods / Purchased Products / Purchased Goods	Computer Storage Device Manufacturing	Purchasing
Category 4 – Indirect / Products Used by the Organization / Capital Goods / Purchased Products / Purchased Goods	Electronic Computer Manufacturing	Purchasing
Category 4 – Indirect / Products Used by the Organization / Purchased Goods and Services / Purchased Products / Purchased Services	Repair and Maintenance of Commercial and Industrial Machinery and Equipment	Purchasing

	(excluding Automotive and Electronics)	
Category 4 – Indirect / Products Used by the Organization / Purchased Goods and Services / Purchased Products / Purchased Services	Catering Services	Purchasing
Category 4 – Indirect / Products Used by the Organization / Purchased Goods and Services / Purchased Products / Purchased Services	Offices of All Other Miscellaneous Health Practitioners	Purchasing
Category 4 – Indirect / Products Used by the Organization / Purchased Goods and Services / Purchased Products / Purchased Services	Cleaning Services	Purchasing
Category 4 – Indirect / Products Used by the Organization / Purchased Goods and Services / Purchased Products / Purchased Services	Security Guards and Patrol Services	Purchasing
Category 4 – Indirect / Products Used by the Organization / Purchased Goods and Services / Purchased Products / Purchased Services	Other Advertising-Related Services	Purchasing
Category 4 – Indirect / Products Used by the Organization / Purchased Goods and Services / Purchased Products / Purchased Services	Administrative Management and General Management Consulting Services	Purchasing
Category 4 – Indirect / Products Used by the Organization / Purchased Goods and Services / Purchased Products / Purchased Services	Insurance Agencies and Brokerage Services	Purchasing
Category 4 – Indirect / Products Used by the Organization / Purchased Goods and Services / Purchased Products / Purchased Services	Transportation Equipment and Supplies Merchant Wholesalers (excluding Motor Vehicles)	Purchasing
Category 4 – Indirect / Products Used by the Organization / Purchased Goods and Services / Purchased Products / Purchased Goods	Institutional Furniture Manufacturing	Purchasing
Category 4 – Indirect / Products Used by the Organization / Purchased Goods and Services / Purchased Products / Purchased Goods	Manufacturing of All Other Miscellaneous Electrical Equipment and Components	Purchasing
Category 4 – Indirect / Products Used by the Organization / Purchased Goods and Services / Purchased Products / Purchased Goods	Major Household Appliance Manufacturing	Purchasing
Category 4 – Indirect / Products Used by the Organization / Purchased Goods and Services / Purchased Products / Purchased Goods	Computer Storage Device Manufacturing	Purchasing
Category 4 – Indirect / Products Used by the Organization / Purchased Goods and Services / Purchased Products / Purchased Goods	Stationery Product Manufacturing	Purchasing
Category 4 – Indirect / Products Used by the Organization / Purchased Goods and Services / Material Use / Organic / Fertilizer Produced from Garden Waste	Primary Material Production	Purchasing
Category 4 – Indirect / Products Used by the Organization / Water	Bottled Water	Purchasing
Category 4 – Indirect / Products Used by the Organization / Water	Municipal Water Supply	Technical Services

Category 4 – Indirect / Products Used by the Organization / Operational Waste	Wastewater	Administrative Services
Category 4 – Indirect / Products Used by the Organization / Operational Waste / Paper & Cardboard / Mixed	Closed-Loop Recycling	Administrative Services
Category 4 – Indirect / Products Used by the Organization / Operational Waste / Plastic / Average Plastic	Closed-Loop Recycling	Administrative Services
Category 4 – Indirect / Products Used by the Organization / Operational Waste / Metal / Scrap Metal	Closed-Loop Recycling	Administrative Services
Category 4 – Indirect / Products Used by the Organization / Operational Waste / Household and Industrial Waste / Commercial and Industrial Waste	Incineration	Administrative Services
Category 4 – Indirect / Products Used by the Organization / Operational Waste / Household and Industrial Waste / Commercial and Industrial Waste	Closed-Loop Recycling	Administrative Services
Category 4 – Indirect / Products Used by the Organization / Operational Waste / Household and Industrial Waste / Organic: Garden Waste	Composting	Technical Services
Category 4 – Indirect / Products Used by the Organization / Operational Waste / Household and Industrial Waste / Urban Waste	Landfilling	Administrative Services
Category 4 – Indirect / Products Used by the Organization / Operational Waste / Household and Industrial Waste / Urban Waste	Closed-Loop Recycling	Administrative Services

CATEGORY 5 – INDIRECT EMISSIONS ASSOCIATED WITH THE USE OF THE ORGANIZATION’S PRODUCTS

Category 5 emissions arise from activities associated with the use of the organization’s sold products and include emissions occurring during life cycle stages after the production process, from sources that are not owned or controlled by the organization.

For Özyeğin University, indirect greenhouse gas sources and activities associated with product use are defined as follows:

Emission Source / Activity	Detail	Data Source
Category 5 – Indirect / Use of Products from the Organization / Downstream Leased Assets / Fuel Emissions	Natural Gas	Natural Gas Bills
Category 5 – Indirect / Use of Products from the Organization / Downstream Leased Assets /	Electricity Emissions	Administrative Services

2.2 EMISSION FACTORS AND OTHER VALUES USED IN CALCULATIONS

LOWER HEATING VALUE (LHV): Lower Heating Value (LHV) refers to the amount of energy determined by measuring the heat generated through the complete combustion of a specified quantity of fuel. It is generally expressed in joules per kilogram. Please refer to Annex 1 for all lower heating values used in the calculations conducted in this study.

GLOBAL WARMING POTENTIAL (GWP): Emission factors are expressed in carbon dioxide equivalents (CO₂e). Greenhouse gas emissions other than carbon dioxide (CO₂) are calculated separately and converted into CO₂ equivalents. During this conversion process, the emissions of each greenhouse gas is multiplied by its corresponding Global Warming Potential (GWP). Please refer to Annex 2 for the GWP values used in the calculations conducted in this study.

OXIDATION FACTOR: The oxidation factor represents the percentage of carbon oxidized during combustion. It is used to calculate the amount of fuel contributing to carbon dioxide emissions. In all calculations presented in this report, the Oxidation Factor was assumed to be equal to one (1).

EMISSION FACTOR: An emission factor is a representative value that relates the quantity of a pollutant released into the atmosphere to an activity associated with the release of that pollutant.

2.3 TIER CONCEPT

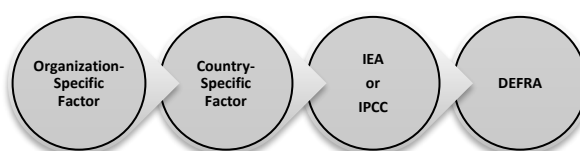
The Intergovernmental Panel on Climate Change classifies methodological approaches into three different tiers based on the amount of required information and the degree of analytical complexity involved.

Tier 1 uses the gain-loss method described in the IPCC Guidelines together with default emission factors and other parameters provided by the IPCC.

Tier 2 generally follows the same methodological approach as Tier 1 but applies country-specific emission factors and other country-specific parameters.

Tier 3 includes higher-precision methods and models and may utilize data that address organization-specific circumstances. When properly implemented, these methods can provide greater accuracy in estimates compared to lower-tier approaches.

In this report, the “highest possible tier” approach was adopted in order to minimize uncertainty and errors in the calculations and to achieve the most accurate results possible. Accordingly, the emission factors used in this study follow a hierarchical approach ranging from the most specific known factor to the most general. Where organization-specific emission factors were available and could be accurately calculated, these factors were prioritized in the calculations. If no organization-specific emission factor was available, country-specific factors reported by the country in which the activity occurred were applied. In cases where country-specific factors were unavailable, emission factors published by the IEA, IPCC or DEFRA were used, respectively, taking into consideration the time period in which the activity occurred. The figure below illustrates the emission factor hierarchy.



Please refer to Annex 3 for all emission factors and data sources used in the calculation of the greenhouse gas inventory of Özyeğin University.

2.4 GREENHOUSE GAS EMISSIONS CALCULATION METHODOLOGY

The methodology used to calculate the greenhouse gas inventory is in compliance with the requirements and principles of ISO 14064-1. It fully incorporates the five core principles: relevance, completeness, consistency, accuracy, and transparency. In summary, the calculation methodology is as follows:

1. Identification of greenhouse gas sources and sinks
2. Selection of the calculation methodology
3. Selection and collection of greenhouse gas activity data
4. Selection or development of greenhouse gas emission or removal factors
5. Calculation of greenhouse gas emissions and removals

Identification of greenhouse gas sources and sinks

The greenhouse gas sources and sinks of Özyeğin University are defined based on all activities within the organizational/reporting boundary and the reporting categories defined in this study.

Selection of the calculation methodology

Since Özyeğin University does not directly measure emissions, a calculation-based methodology is used to quantify emissions. Calculations are made by multiplying measured greenhouse gas activity data by corresponding emission or removal factors. (The general calculation formula is provided below.)

Selection and collection of greenhouse gas activity data

Once activities within the organizational greenhouse gas boundary are identified, activity data collected from site operations are consolidated by the GHG Site Coordinators using the QuickCarbon software, which allows real-time data entry for operational activities. To ensure the highest possible level of accuracy and consistency, collected data are verified against supporting evidence such as invoices and meter readings. In addition to supporting documentation, activity data are recorded in the controlled web-based environment of the QuickCarbon software. Prior to conversion into this report, the entered data are reviewed by an authorized reviewer responsible for completeness, consistency, and accuracy

Selection or development of greenhouse gas emission or removal factors

Emission and removal factors are selected as described in the previous section (Section 2.2).

Calculation of greenhouse gas emissions and removals

All calculations are performed using the web-based QuickCarbon software. This software applies a calculation methodology in which greenhouse gas activity data are multiplied by emission factors to quantify greenhouse gas emissions. The formula used to calculate greenhouse gas emissions at Özyeğin University is as follows:

Greenhouse Gas Emissions (metric tons) = GHG Activity Data × Emission Factor (tCO₂e/ activity data) × Oxidation Factor × Global Warming Potential

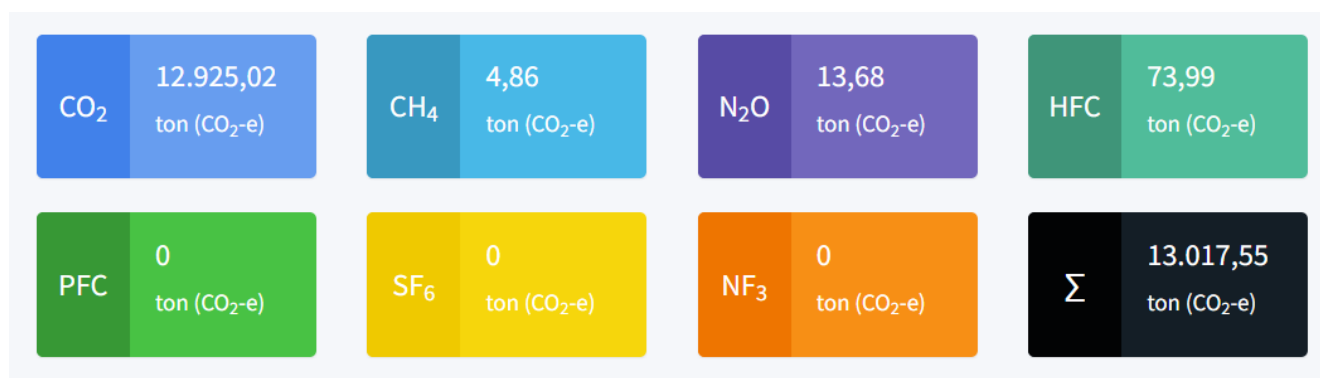
3. GREENHOUSE GAS EMISSION INVENTORY

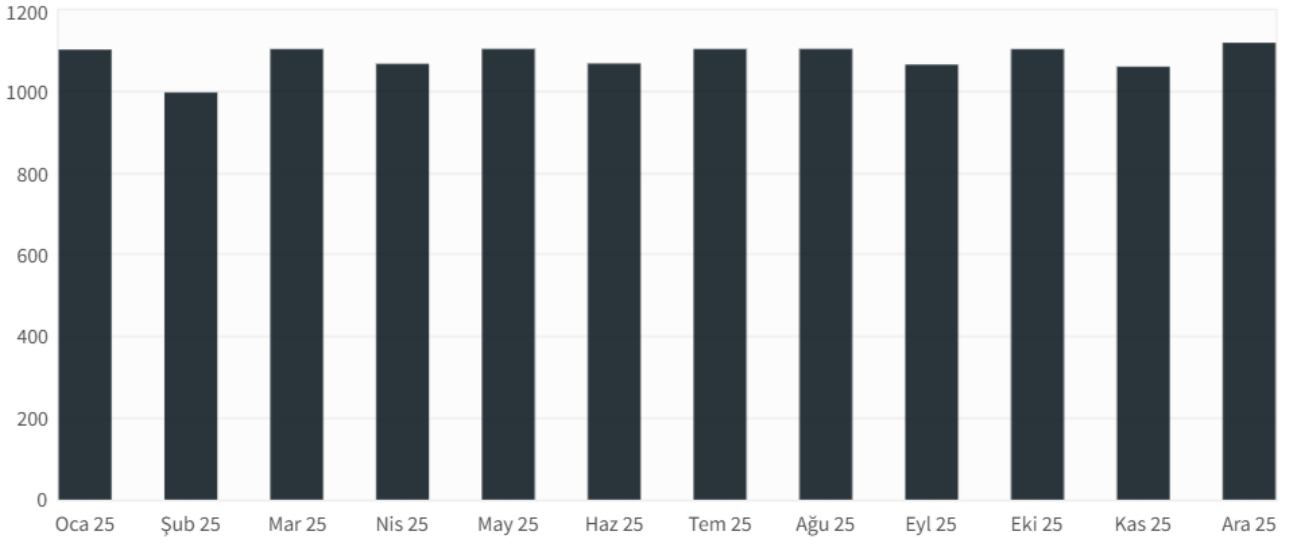
3.1 REPORTING PERIOD RESULTS

The total greenhouse gas emissions associated with activities within the organizational and reporting boundaries of Özyeğin University for the 2025 reporting period amount to **13,017.548 metric tons CO₂e**. The distribution of emissions by category and greenhouse gas is presented below:

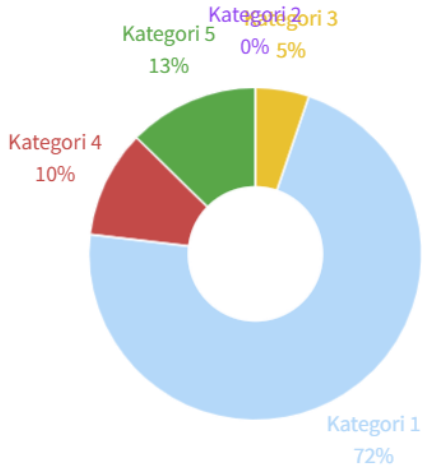
Emissions (t CO ₂ -e)	CO ₂	CH ₄	N ₂ O	HFC	PFC	SF ₆	NF ₃	TOTAL
Category 1 (Direct)	9,243.274 tons	4.682 tons	5.596 tons	73.995 tons	0 ton	0 ton	0 ton	9,327.547 tons
Category 2 (Indirect - Purchased Energy)	4.412 tons	0 ton	0 ton	0 ton	0 ton	0 ton	0 ton	4.412 tons
Category 3 (Indirect – Transportation)	670.225 tons	0.13 tons	8.042 tons	0 ton	0 ton	0 ton	0 ton	678.397 tons
Category 4 (Indirect - Products Used by the Organization)	1,361.608 tons	0 ton	0 ton	0 ton	0 ton	0 ton	0 ton	1,361.608 tons
Category 5 (Indirect - Use of Products from the Organization)	1,645.499 tons	0.043 tons	0.042 tons	0 ton	0 ton	0 ton	0 ton	1,645.584 tons
Category 6 (Indirect – Other Sources)	0 ton	0 ton	0 ton	0 ton	0 ton	0 ton	0 ton	0 ton
TOTAL EMISSIONS	12,925.018 tons	4.855 tons	13.68 tons	73.995 tons	0 tons	0 tons	0 ton	13,017.548 tons
GROSS EMISSIONS (BEFORE OFFSETTING)	12,925.018 tons	4.855 tons	13.68 tons	73.995 tons	0 tons	0 tons	0 ton	13,017.548 tons

A detailed breakdown of the emission subcategories for each category is provided in Annex 5.

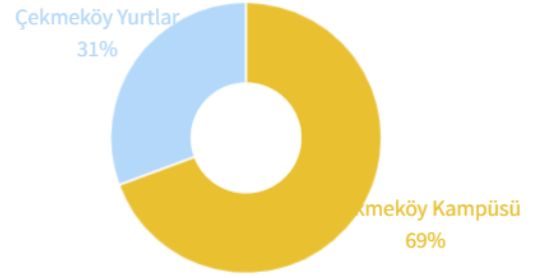




Aktivite Türüne Göre Emisyonlar



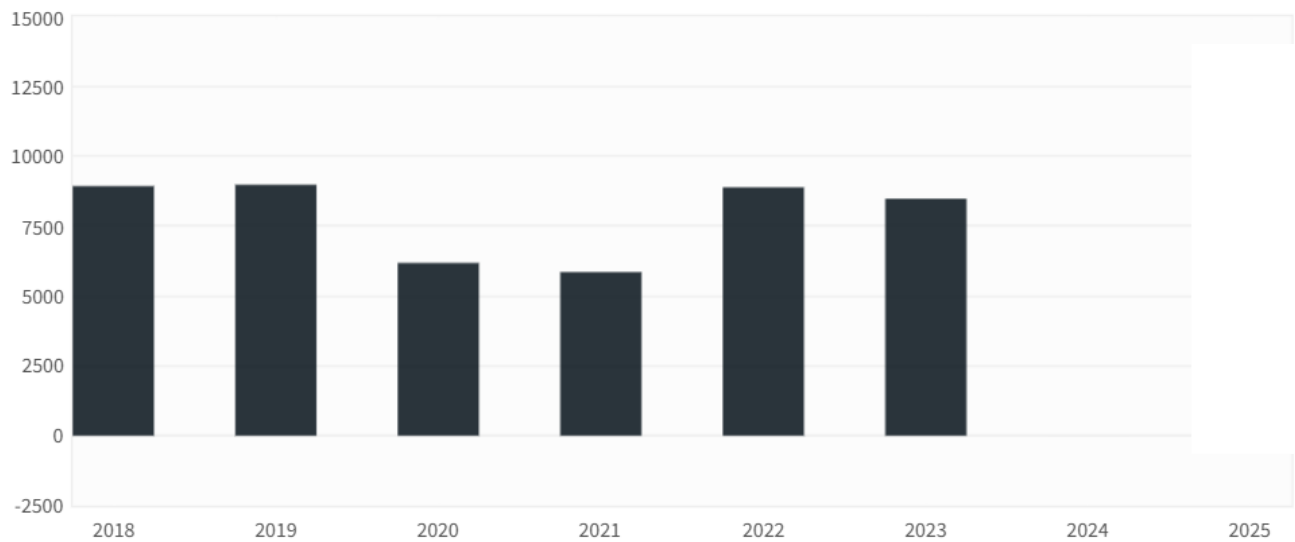
Organizasyona Göre Emisyonlar



3.2 YEAR-ON-YEAR EMISSION TREND ANALYSIS

A year-on-year comparison of emissions is provided in the table below:

Emissions (ton CO ₂ -e)	2018	2019	2020	2021	2022	2023	2024	2025
Category 1 (Direct)	7,647.22	7,295.36	5,798.06	5,653.18	4,898.51	7,576.41	8,374.63	9,327.547
Category 2 (Indirect - Purchased Energy)	1,283.73	1,682.97	383.70	200.92	4,386.36	901.86	1,283.17	4.412
Category 3 (Indirect – Transportation)	-	-	-	-	-	-	-	678.397
Category 4 (Indirect - Products Used by the Organization)	-	-	-	-	-	-	-	1,361.608
Category 5 (Indirect - Use of Products from the Organization)	-	-	-	-	-	-	-	1,645.584
Category 6 (Indirect – Other Sources)	-	-	-	-	-	-	-	-
GROSS EMISSIONS (BEFORE OFFSETTING)	-	-	-	-	-	-	9,657.80	13,017.548



4. UNCERTAINTIES

Inventory Uncertainties

In this inventory, the activity data used in the calculations is based on primary data derived from invoices verified by Özyeğin University and/or company meters, as well as software records and other documented sources. Where the accuracy specifications (margin of error) of measurement equipment or calculation methodologies are known, these accuracy parameters are defined within the “Recorders” module of the QuickCarbon software. This information is subsequently used to assess inventory uncertainty in accordance with the uncertainty assessment principles set forth in the Greenhouse Gas Protocol. A list of the recorders used in the inventory calculations for this report, together with their associated accuracy specifications, is provided in Annex 6. For all other records where accuracy information was unavailable, a default uncertainty value of 2.000% was applied.

Emission Factor Uncertainties

The uncertainty associated with emission factors obtained from the IPCC was assumed to be 7%. The uncertainty associated with the EIA data used for the electricity emission factor was assumed to be 5%.

Uncertainty Calculation and Assessment

Based on the calculations performed using Özyeğin University’s data, the overall uncertainty of the greenhouse gas inventory was determined to be \pm %2.929. According to the Greenhouse Gas Protocol, this level of accuracy may be classified as **High**.

The uncertainty levels calculated for specific activities are presented in the table below.

Emission Category	Activity Data Uncertainty	Emission Factor Uncertainty	Calculated Uncertainty	Accuracy Rating
Category 3 – Indirect / Transportation / Business Travel / Air Transportation / Commercial Flights / Economy Class	2.000%	7.000%	\pm 7.280%	Good
Category 1 - Direct / Mobil Combustion / Company Vehicles / Diesel	2.000%	5.394%	\pm 5.753%	Good
Category 1 - Direct / Mobil Combustion / Company Vehicles / Gasoline	2.000%	7.315%	\pm 7.583%	Good
Category 3 – Indirect / Transportation / Upstream Transportation and Distribution / Land Transportation / Road Transportation / Light-Duty Trucks / Average (up to 3.5 tons) / Diesel	2.000%	7.000%	\pm 7.280%	Good
Category 4 – Indirect / Products Used by the Organization / Capital Goods / Purchased Products / Purchased Goods / Computer Storage Device Manufacturing	2.000%	7.000%	\pm 7.280%	Good
Category 4 – Indirect / Products Used by the Organization / Purchased Goods and Services / Purchased Products / Purchased Services / Security Guards and Patrol Services	2.000%	7.000%	\pm 7.280%	Good
Category 4 – Indirect / Products Used by the Organization / Purchased Goods and Services / Purchased Products / Purchased Services / Transportation Equipment and Supplies Merchant Wholesalers (excluding Motor Vehicles)	2.000%	7.000%	\pm 7.280%	Good

Category 4 – Indirect / Products Used by the Organization / Purchased Goods and Services / Purchased Products / Purchased Services / Catering Services	2.000%	7.000%	± 7.280%	Good
Category 4 – Indirect / Products Used by the Organization / Purchased Goods and Services / Purchased Products / Purchased Services / Cleaning Services	2.000%	7.000%	± 7.280%	Good
Category 4 – Indirect / Products Used by the Organization / Purchased Goods and Services / Purchased Products / Purchased Services / Offices of Other Miscellaneous Health Practitioners	2.000%	7.000%	± 7.280%	Good
Category 4 – Indirect / Products Used by the Organization / Purchased Goods and Services / Purchased Products / Purchased Goods / Institutional Furniture Manufacturing	2.000%	7.000%	± 7.280%	Good
Category 4 – Indirect / Products Used by the Organization / Purchased Goods and Services / Purchased Products / Purchased Goods / Computer Storage Device Manufacturing	2.000%	7.000%	± 7.280%	Good
Category 1 – Direct / Stationary Combustion / Energy Generation / Cogeneration-Trigeneration / Hot Water Generation / Natural Gas	2.000%	6.354%	± 6.662%	Good
Category 1 – Direct / Stationary Combustion / Energy Generation / Cogeneration-Trigeneration / Electricity Generation / Natural Gas	2.000%	6.354%	± 6.662%	Good
Category 1 – Direct / Stationary Combustion / Space Heating / Natural Gas	2.000%	6.354%	± 6.662%	Good
Category 4 – Indirect / Products Used by the Organization / Water / Municipal Water Supply	2.000%	7.000%	± 7.280%	Good
Category 4 – Indirect / Products Used by the Organization / Operational Waste / Wastewater	2.000%	7.000%	± 7.280%	Good
Category 4 – Indirect / Products Used by the Organization / Operational Waste / Paper & Cardboard / Mixed / Closed Loop Recycling	2.000%	7.000%	± 7.280%	Good
Category 4 – Indirect / Products Used by the Organization / Operational Waste / Plastic / Average Plastic / Closed Loop Recycling	2.000%	7.000%	± 7.280%	Good
Category 1 – Direct / Stationary Combustion / Other Combustion / Diesel	2.000%	5.394%	± 5.753%	Good
Category 4 – Indirect / Products Used by the Organization / Capital Goods / Purchased Products / Purchased Goods / Major Household Appliance Manufacturing	2.000%	7.000%	± 7.280%	Good
Category 3 – Indirect / Transportation / Business Travel / Accommodation / Hotel Stays / Türkiye	2.000%	7.000%	± 7.280%	Good
Category 3 – Indirect / Transportation / Upstream Transportation and Distribution / Air Transportation / Cargo Flights	2.000%	7.000%	± 7.280%	Good
Category 3 – Indirect / Transportation / Employee Commuting / Land Transportation / Road Transportation / Minibuses / Midi-Buses / Buses / Shuttles	2.000%	7.000%	± 7.280%	Good
Category 3 – Indirect / Transportation / Employee Commuting / Land Transportation / Road Transportation / Minibuses / Midi-Buses / Buses / Coaches (Inter-City Buses)	2.000%	7.000%	± 7.280%	Good
Category 1 – Direct / Non-Combustion Direct Emissions / Space Cooling / Cooling Systems / Refrigerators / R-600A	2.000%	0.000%	± 2.000%	High

Category 1 – Direct / Non-Combustion Direct Emissions / Space Cooling / Cooling Systems / Water Dispensers / R134-A	2.000%	35.000%	± 35.057%	Poor
Category 1 – Direct / Non-Combustion Direct Emissions / Space Cooling / Cooling Systems / Chiller / R134-A	2.000%	35.000%	± 35.057%	Poor
Category 4 – Indirect / Products Used by the Organization / Operational Waste / Metal / Scrap Metal / Closed Loop Recycling	2.000%	7.000%	± 7.280%	Good
Category 4 – Indirect / Products Used by the Organization / Water / Bottled Water	2.000%	7.000%	± 7.280%	Good
Category 4 – Indirect / Products Used by the Organization / Purchased Goods and Services / Purchased Products / Purchased Goods / Stationery Product Manufacturing	2.000%	7.000%	± 7.280%	Good
Category 4 – Indirect / Products Used by the Organization / Purchased Goods and Services / Purchased Products / Purchased Services / Repair and Maintenance of Commercial and Industrial Machinery and Equipment (excluding Automotive and Electronics)	2.000%	7.000%	± 7.280%	Good
Category 4 – Indirect / Products Used by the Organization / Purchased Goods and Services / Purchased Products / Purchased Services / Administrative Management and General Management Consulting Services	2.000%	7.000%	± 7.280%	Good
Category 4 – Indirect / Products Used by the Organization / Purchased Goods and Services / Purchased Products / Purchased Services / Insurance Agencies and Brokerage Services	2.000%	7.000%	± 7.280%	Good
Category 4 – Indirect / Products Used by the Organization / Capital Goods / Purchased Products / Purchased Goods / Institutional Furniture Manufacturing	2.000%	7.000%	± 7.280%	Good
Category 4 – Indirect / Products Used by the Organization / Capital Goods / Purchased Products / Purchased Goods / Electronic Computer Manufacturing	2.000%	7.000%	± 7.280%	Good
Category 4 – Indirect / Products Used by the Organization / Capital Goods / Purchased Products / Purchased Goods / Major Household Appliance Manufacturing	2.000%	7.000%	± 7.280%	Good
Category 4 – Indirect / Products Used by the Organization / Purchased Goods and Services / Purchased Products / Purchased Goods / Manufacturing of All Other Miscellaneous Electrical Equipment and Components	2.000%	7.000%	± 7.280%	Good
Category 4 – Indirect / Products Used by the Organization / Purchased Goods and Services / Purchased Products / Purchased Services / Other Advertising-Related Services	2.000%	7.000%	± 7.280%	Good
Category 1 – Direct / Non-Combustion Direct Emissions / Space Cooling / Cooling Systems / Air Conditioning Units / R-401A	2.000%	35.000%	± 35.057%	Poor
Category 5 – Indirect / Use of Products from the Organization / Downstream Leased Assets / Fuel Emissions / Natural Gas	2.000%	6.354%	± 6.662%	Good
Category 1 – Direct / Non-Combustion Direct Emissions / Fire Extinguishers / CO2	2.000%	0.000%	± 2.000%	High

Category 1 – Direct / Non-Combustion Direct Emissions / Space Cooling / Cooling Systems / Industrial Cold Rooms / R134-A	2.000%	35.000%	± 35.057%	Poor
Category 4 – Indirect / Products Used by the Organization / Operational Waste / Household and Industrial Waste / Urban Waste / Closed Loop Recycling	2.000%	7.000%	± 7.280%	Good
Category 2 – Indirect / Purchased Energy / Electricity Consumption / Purchased Electricity	2.000%	5.000%	± 5.385%	Good
Category 5 – Indirect / Use of Products from the Organization / Downstream Leased Assets / Electricity Emissions	2.000%	5.000%	± 5.385%	Good
Category 4 – Indirect / Products Used by the Organization / Operational Waste / Household and Industrial Waste / Commercial and Industrial Waste / Incineration	2.000%	7.000%	± 7.280%	Good
Category 4 – Indirect / Products Used by the Organization / Operational Waste / Household and Industrial Waste / Commercial and Industrial Waste / Closed Loop Recycling	2.000%	7.000%	± 7.280%	Good
Category 3 – Indirect / Transportation / Employee Commuting / Land Transportation / Road Transportation / Automobiles / By Market Segment / Lower Medium Class (C-Segment) / Diesel	2.000%	7.000%	± 7.280%	Good
Category 2 – Indirect / Purchased Energy / Electricity Consumption / Self-Generation / Renewable Energy Sources	2.000%	7.000%	± 7.280%	Good
Category 4 – Indirect / Products Used by the Organization / Operational Waste / Household and Industrial Waste / Organic: Garden Waste / Composting	2.000%	7.000%	± 7.280%	Good
Category 4 – Indirect / Products Used by the Organization / Purchased Goods and Services / Material Use / Organic / Fertilizer Produced from Garden Waste / Primary Material Production	2.000%	7.000%	± 7.280%	Good
Category 4 – Indirect / Products Used by the Organization / Operational Waste / Household and Industrial Waste / Urban Waste / Landfilling	2.000%	7.000%	± 7.280%	Good

5. GREENHOUSE GAS MITIGATION MEASURES

Under the ISO 14001 Environmental Management System, efforts are undertaken to minimize environmental impacts in both existing operations and new investments. All activities are pursued with a commitment to continuous improvement.

Environmental impacts have been minimized through LEED-certified buildings and other facilities constructed in compliance with comparable sustainability principles.

Campus-wide initiatives aimed at improving energy efficiency are designed and implemented in alignment with the ISO 50001 Energy Management System. Projects such as process optimization, building automation systems, and energy monitoring programs are actively pursued. Energy performance indicators are regularly monitored to support continuous improvement.

Significant greenhouse gas emissions reductions have been achieved through numerous energy efficiency projects developed and implemented by the Center for Energy, Environment and Economy (CEEE), including Need4B, Legofit, and other innovative initiatives.

As part of the Water Efficiency Mobilization Project, water use processes are systematically assessed through monitoring, measurement, and continuous improvement practices. These efforts are carried out in accordance with the ISO 46001 Water Efficiency Management System. Water performance indicators are tracked regularly to support reductions in water consumption.

Greywater and rainwater harvesting systems are utilized to promote the efficient use of water resources and support the development of a more sustainable campus environment.

In line with established strategic goals, the University seeks to enhance the environmental, economic, and social sustainability of the campus. Progress toward these goals is monitored regularly and reviewed by senior management.

To reduce environmental impacts and foster a more sustainable campus environment, motor vehicle access to campus premises is restricted. Shuttle services have been expanded, and the frequency of public transportation services has been increased. In addition, transportation optimization initiatives have reduced fuel consumption and contributed to environmental sustainability.

To support biodiversity conservation and enhance carbon sequestration capacity, tree-planting activities are carried out regularly across the campus.

Within the framework of sustainable waste management, waste segregation at source is actively promoted. The principles of Reduce–Reuse–Recycle are encouraged to improve resource efficiency and minimize waste generation.

Environmental sustainability training programs are provided to increase environmental awareness among employees and foster a culture of sustainability. In addition, student organizations such as HSE Community and Social Awareness organize environmental and social awareness activities aimed at engaging students and promoting sustainable behaviors.

6. ANNEXES

ANNEX 1 - LOWER HEATING VALUES USED IN THE CALCULATIONS

Gases	Lower Heating Value	Source
Category 5 – Indirect / Use of Products from the Organization / Downstream Leased Assets / Fuel Emissions / Natural Gas	12,313.43 kcal / kg	Türkiye
Category 1 - Direct / Mobil Combustion / Company Vehicles / Gasoline	10,400 kcal / kg	Türkiye
Category 1 - Direct / Mobil Combustion / Company Vehicles / Diesel	10,200 kcal / kg	Türkiye
Category 1 – Direct / Stationary Combustion / Energy Generation / Cogeneration-Trigeneration / Hot Water Generation / Natural Gas	12,313.43 kcal / kg	Türkiye
Category 1 – Direct / Stationary Combustion / Energy Generation / Cogeneration-Trigeneration / Electricity Generation / Natural Gas	12,313.43 kcal / kg	Türkiye
Category 1 – Direct / Stationary Combustion / Other Combustion / Diesel	10,200 kcal / kg	Türkiye
Category 1 – Direct / Stationary Combustion / Space Heating / Natural Gas	12,313.43 kcal / kg	Türkiye

ANNEX 2 – GLOBAL WARMING POTENTIAL VALUES

Gas Type	GWP	Source
CO2	1 kg / kg	IPCC AR6
CH4	27.9 kg / kg	IPCC AR6
N2O	273 kg / kg	IPCC AR6
HFC-134a	1,530 kg / kg	IPCC AR6
HFC-152a	164 kg / kg	IPCC AR6

ATTACHMENT 3 - EMISSION FACTORS

Emission Factors for Category 1 (Direct) Emissions

Emission Source	EF CO ₂	EF CH ₄	EF N ₂ O	Source
Category 1 - Direct / Mobil Combustion / Company Vehicles / Gasoline	69,300kg / TJ	3.8kg / TJ	5.7kg / TJ	IPCC 2006
Category 1 - Direct / Mobil Combustion / Company Vehicles / Diesel	74,100kg / TJ	3.9kg / TJ	3.9kg / TJ	IPCC 2006
Category 1 – Direct / Stationary Combustion / Energy Generation / Cogeneration-Trigeneration / Hot Water Generation / Natural Gas	56,100kg / TJ	1kg / TJ	0.1kg / TJ	IPCC 2006
Category 1 – Direct / Stationary Combustion / Energy Generation / Cogeneration-Trigeneration / Electricity Generation / Natural Gas	56,100kg / TJ	1kg / TJ	0.1kg / TJ	IPCC 2006
Category 1 – Direct / Stationary Combustion / Other Combustion / Diesel	74,100kg / TJ	3kg / TJ	0.6kg / TJ	IPCC 2006
Category 1 – Direct / Stationary Combustion / Space Heating / Natural Gas	56,100kg / TJ	1kg / TJ	0.1kg / TJ	IPCC 2006

Emission Factors for Category 2 (Indirect - Purchased Energy) Emissions

Emission Source	EF CO ₂	EF CH ₄	EF N ₂ O	Source
Category 2 – Indirect / Purchased Energy / Electricity Consumption / Purchased Electricity	0.44kg / kWh			TR Ministry of Energy and Natural Resources 2025

Emission Factors for Category 3 (Indirect - Transportation) Emissions

Emission Source	EF CO ₂	EF CH ₄	EF N ₂ O	Source
Category 3 – Indirect / Transportation / Upstream Transportation and Distribution / Land Transportation / Road Transportation / Light-Duty Trucks / Average (up to 3.5 tons) / Diesel	0.25kg / km	0kg / km	0kg / km	Defra 2025
Category 3 – Indirect / Transportation / Upstream Transportation and Distribution / Air Transportation / Cargo Flights	0.89 kg / ton.km	0 kg / ton.km	0 kg / ton.km	Defra 2025
Category 3 – Indirect / Transportation / Employee Commuting / Land Transportation / Road Transportation / Minibuses / Midi-Buses / Buses / Shuttles	0.03kg / passenger-km	0kg / passenger-km	0kg / passenger-km	Defra 2025
Category 3 – Indirect / Transportation / Employee Commuting / Land Transportation / Road Transportation / Minibuses / Midi-Buses / Buses / Coaches (Inter-City Buses)	0.03kg / passenger-km	0kg / passenger-km	0kg / passenger-km	Defra 2025
Category 3 – Indirect / Transportation / Employee Commuting / Land Transportation / Road Transportation / Automobiles / By Market Segment / Lower Medium Class (C-Segment) / Diesel	0.14kg / km	0kg / km	0kg / km	Defra 2025
Category 3 – Indirect / Transportation / Business Travel / Accommodation / Hotel Stays / Türkiye	32.1kg / room-night			Defra 2025

Category 3 – Indirect / Transportation / Business Travel / Air Transportation / Commercial Flights / Economy Class	0.11kg / passenger-km	0kg / passenger-km	0kg / passenger-km	Defra 2025
--	-----------------------	--------------------	--------------------	------------

Emission Factors for Category 4 (Indirect - Products Used by the Organization) Emissions

Emission Source	EF CO ₂	EF CH ₄	EF N ₂ O	Source
Category 4 – Indirect / Products Used by the Organization / Capital Goods / Purchased Products / Purchased Goods / Institutional Furniture Manufacturing	0.25kg / USD			EPA 1.3
Category 4 – Indirect / Products Used by the Organization / Capital Goods / Purchased Products / Purchased Goods / Major Household Appliance Manufacturing	0.17kg / USD			EPA 1.3
Category 4 – Indirect / Products Used by the Organization / Capital Goods / Purchased Products / Purchased Goods / Computer Storage Device Manufacturing	0.07kg / USD			EPA 1.3
Category 4 – Indirect / Products Used by the Organization / Capital Goods / Purchased Products / Purchased Goods / Electronic Computer Manufacturing	0.06kg / USD			EPA 1.3
Category 4 – Indirect / Products Used by the Organization / Purchased Goods and Services / Purchased Products / Purchased Services / Repair and Maintenance of Commercial and Industrial Machinery and Equipment (excluding Automotive and Electronics)	0.14kg / USD			EPA 1.3
Category 4 – Indirect / Products Used by the Organization / Purchased Goods and Services / Purchased Products / Purchased Services / Catering Services	0.13kg / USD			EPA 1.3
Category 4 – Indirect / Products Used by the Organization / Purchased Goods and Services / Purchased Products / Purchased Services / Offices of All Other Miscellaneous Health Practitioners	0.1kg / USD			EPA 1.3
Category 4 – Indirect / Products Used by the Organization / Purchased Goods and Services / Purchased Products / Purchased Services / Cleaning Services	0.21kg / USD			EPA 1.3
Category 4 – Indirect / Products Used by the Organization / Purchased Goods and Services / Purchased Products / Purchased Services / Security Guards and Patrol Services	0.07kg / USD			EPA 1.3
Category 4 – Indirect / Products Used by the Organization / Purchased Goods and Services / Purchased Products / Purchased Services / Other Advertising-Related Services	0.08kg / USD			EPA 1.3
Category 4 – Indirect / Products Used by the Organization / Purchased Goods and Services / Purchased Products / Purchased Services / Administrative Management and General Management Consulting Services	0.08kg / USD			EPA 1.3

Category 4 – Indirect / Products Used by the Organization / Purchased Goods and Services / Purchased Products / Purchased Services / Insurance Agencies and Brokerage Services	0.03kg / USD			EPA 1.3
Category 4 – Indirect / Products Used by the Organization / Purchased Goods and Services / Purchased Products / Purchased Services / Transportation Equipment and Supplies Merchant Wholesalers (excluding Motor Vehicles)	0.12kg / USD			EPA 1.3
Category 4 – Indirect / Products Used by the Organization / Purchased Goods and Services / Purchased Products / Purchased Goods / Institutional Furniture Manufacturing	0.25kg / USD			EPA 1.3
Category 4 – Indirect / Products Used by the Organization / Purchased Goods and Services / Purchased Products / Purchased Goods / Manufacturing of All Other Miscellaneous Electrical Equipment and Components	0.13kg / USD			EPA 1.3
Category 4 – Indirect / Products Used by the Organization / Capital Goods / Purchased Products / Purchased Goods / Major Household Appliance Manufacturing	0.17kg / USD			EPA 1.3
Category 4 – Indirect / Products Used by the Organization / Purchased Goods and Services / Purchased Products / Purchased Goods / Computer Storage Device Manufacturing	0.07kg / USD			EPA 1.3
Category 4 – Indirect / Products Used by the Organization / Purchased Goods and Services / Purchased Products / Purchased Goods / Stationery Product Manufacturing	0.3kg / USD			EPA 1.3
Category 4 – Indirect / Products Used by the Organization / Purchased Goods and Services / Material Use / Organic / Fertilizer Produced from Garden Waste / Primary Material Production	112.09kg / ton			Defra 2025
Category 4 – Indirect / Products Used by the Organization / Water / Bottled Water	0.19kg / m3			Defra 2025
Category 4 – Indirect / Products Used by the Organization / Water / Municipal Water Supply	0.19kg / m3			Defra 2025
Category 4 – Indirect / Products Used by the Organization / Operational Waste / Wastewater	0.17kg / m3			Defra 2025
Category 4 – Indirect / Products Used by the Organization / Operational Waste / Paper & Cardboard / Mixed / Closed Loop Recycling	4.69kg / ton			Defra 2025
Category 4 – Indirect / Products Used by the Organization / Operational Waste / Plastic / Average Plastic / Closed Loop Recycling	4.69kg / ton			Defra 2025
Category 4 – Indirect / Products Used by the Organization / Operational Waste / Metal / Scrap Metal / Closed Loop Recycling	4.69kg / ton			Defra 2025
Category 4 – Indirect / Products Used by the Organization / Operational Waste / Household and Industrial Waste / Commercial and Industrial Waste / Incineration	4.69kg / ton			Defra 2025
Category 4 – Indirect / Products Used by the Organization / Operational Waste / Household and Industrial Waste / Commercial and Industrial Waste / Closed Loop Recycling	21.29kg / ton			Defra 2021

Category 4 – Indirect / Products Used by the Organization / Operational Waste / Household and Industrial Waste / Organic: Garden Waste / Composting	8.98kg / ton			Defra 2025
Category 4 – Indirect / Products Used by the Organization / Operational Waste / Household and Industrial Waste / Urban Waste / Landfilling	497.24kg / ton			Defra 2025
Category 4 – Indirect / Products Used by the Organization / Operational Waste / Household and Industrial Waste / Urban Waste / Closed Loop Recycling	21.29kg / ton			Defra 2021

Emission Factors for Category 5 (Indirect - Use of Products from the Organization) Emissions

Emission Source	EF CO ₂	EF CH ₄	EF N ₂ O	Source
Category 5 – Indirect / Use of Products from the Organization / Downstream Leased Assets / Fuel Emissions / Natural Gas	56,100kg / TJ	1kg / TJ	0.1kg / TJ	IPCC 2006
Category 5 – Indirect / Use of Products from the Organization / Downstream Leased Assets / Electricity Emissions	0.44kg / kWh			TR Ministry of Energy and Natural Resources 2025

ANNEX 4 – 2025 LOCATION-BASED GREENHOUSE GAS EMISSIONS INVENTORY

Category 1 (Direct) Emissions

Emissions (t CO ₂ -e)	CO ₂	CH ₄	N ₂ O	HFC	PFC	SF ₆	NF ₃	TOTAL
Çekmeköy Campus	6,175.18 tons	3.156 tons	4.103 tons	73.082 tons	0 tons	0 tons	0 tons	6,255.522 tons
Çekmeköy Dormitories	3,068.094 tons	1.526 tons	1.493 tons	0.912 tons	0 tons	0 tons	0 tons	3,072.025 tons
TOTAL	9,243.274 tons	4.682 tons	5.596 tons	73.995 tons	0 tons	0 tons	0 tons	9,327.547 tons

Category 2 (Indirect - Purchased Energy) Emissions

Emissions (t CO ₂ -e)	CO ₂	CH ₄	N ₂ O	HFC	PFC	SF ₆	NF ₃	TOTAL
Çekmeköy Campus	4.412 tons	0 tons	0 tons	0 tons	0 tons	0 tons	0 tons	4.412 tons
Çekmeköy Dormitories	0 tons	0 tons	0 tons	0 tons	0 tons	0 tons	0 tons	0 tons
TOTAL	4.412 tons	0 tons	0 tons	0 tons	0 tons	0 tons	0 tons	4.412 tons

Category 3 (Indirect - Transportation) Emissions

Emissions (t CO ₂ -e)	CO ₂	CH ₄	N ₂ O	HFC	PFC	SF ₆	NF ₃	TOTAL
Çekmeköy Campus	660.56 tons	0.129 tons	7.98 tons	0 tons	0 tons	0 tons	0 tons	668.669 tons

Çekmeköy Dormitories	0 tons	0 tons	0 tons	0 tons	0 tons	0 tons	0 tons	0 tons
TOTAL	670.225 tons	0.13 tons	8.042 tons	0 tons	0 tons	0 tons	0 tons	678.397 tons

Category 4 (Indirect / Products Used by the Organization) Emissions

Emissions (t CO ₂ -e)	CO ₂	CH ₄	N ₂ O	HFC	PFC	SF ₆	NF ₃	TOTAL
Çekmeköy Campus	1,262.112 tons	0 tons	0 tons	0 tons	0 tons	0 tons	0 tons	1,262.112 tons
Çekmeköy Dormitories	99.495 tons	0 tons	0 tons	0 tons	0 tons	0 tons	0 tons	99.495 tons
TOTAL	1,361.608 tons	0 tons	0 tons	0 tons	0 tons	0 tons	0 tons	1,361.608 tons

Category 5 (Indirect / Use of Products from the Organization) Emissions

Emissions (t CO ₂ -e)	CO ₂	CH ₄	N ₂ O	HFC	PFC	SF ₆	NF ₃	TOTAL
Çekmeköy Campus	828.979 tons	0.024 tons	0.024 tons	0 tons	0 tons	0 tons	0 tons	829.027 tons
Çekmeköy Dormitories	816.52 tons	0.019 tons	0.018 tons	0 tons	0 tons	0 tons	0 tons	816.557 tons
TOTAL	1,645.499 tons	0.043 tons	0.042 tons	0 tons	0 tons	0 tons	0 tons	1,645.584 tons

ANNEX 5 – 2025 ACTIVITY-BASED GREENHOUSE GAS EMISSIONS INVENTORY

The emissions listed below include only those resulting from activity data entries within the QuickCarbon software. Emission data based on directly entered activities for the campus and dormitories are not included in the tables below. These can be found separately in Annex 4 – Location-Based Greenhouse Gas Emissions Inventory.

Category 1 (Direct) Emissions

Emissions (t CO ₂ -e)	CO ₂	CH ₄	N ₂ O	HFC	PFC	SF ₆	NF ₃	TOTAL
Category 1 – Direct / Non-Combustion Direct Emissions / Fire Extinguishers / CO ₂	0.09 tons	0 tons	0 tons	0 tons	0 tons	0 tons	0 tons	0.09 tons
Category 1 – Direct / Non-Combustion Direct Emissions / Space Cooling / Cooling Systems / Water Dispensers / R134-A	0 tons	0 tons	0 tons	0.007 tons	0 tons	0 tons	0 tons	0.007 tons
Category 1 – Direct / Non-Combustion Direct Emissions / Space Cooling / Cooling Systems / Air Conditioning Units / R-401A	0 tons	0 tons	0 tons	1.732 tons	0 tons	0 tons	0 tons	1.732 tons
Category 1 – Direct / Non-Combustion Direct Emissions / Space Cooling / Cooling Systems / Chillers / R134-A	0 tons	0 tons	0 tons	61.2 tons	0 tons	0 tons	0 tons	61.2 tons
Category 1 – Direct / Non-Combustion Direct Emissions / Space Cooling / Cooling	0 tons	0 tons	0 tons	11.056 tons	0 tons	0 tons	0 tons	11.056 tons

Systems / Industrial Cold Rooms / R134-A								
Category 1 – Direct / Non-Combustion Direct Emissions / Space Cooling / Cooling Systems / Refrigerators / R-600A	0 tons	0 tons	0 tons	0 tons	0 tons	0 tons	0 tons	0 tons
Category 1 - Direct / Mobil Combustion / Company Vehicles / Gasoline	17.677 tons	0.027 tons	0.397 tons	0 tons	0 tons	0 tons	0 tons	18.101 tons
Category 1 - Direct / Mobil Combustion / Company Vehicles / Diesel	46.899 tons	0.069 tons	0.674 tons	0 tons	0 tons	0 tons	0 tons	47.642 tons
Category 1 – Direct / Stationary Combustion / Energy Generation / Cogeneration-Trigeneration / Hot Water Generation / Natural Gas	1,870.447 tons	0.93 tons	0.91 tons	0 tons	0 tons	0 tons	0 tons	1,872.288 tons
Category 1 – Direct / Stationary Combustion / Energy Generation / Cogeneration-Trigeneration / Electricity Generation / Natural Gas	4,204.037 tons	2.091 tons	2.046 tons	0 tons	0 tons	0 tons	0 tons	4,208.173 tons
Category 1 – Direct / Stationary Combustion / Other Combustion / Diesel	34.122 tons	0.039 tons	0.075 tons	0 tons	0 tons	0 tons	0 tons	34.236 tons
Category 1 – Direct / Stationary Combustion / Space Heating / Natural Gas	3,070.001 tons	1.527 tons	1.494 tons	0 tons	0 tons	0 tons	0 tons	3,073.022 tons
TOTAL	9,243.274 tons	4.682 tons	5.596 tons	73.995 tons	0 tons	0 tons	0 tons	9,327.547 tons

Category 2 (Indirect - Purchased Energy) Emissions

Emissions (t CO ₂ -e)	CO ₂	CH ₄	N ₂ O	HFC	PFC	SF ₆	NF ₃	TOTAL
Category 2 – Indirect / Purchased Energy / Electricity Consumption / Self-Generation / Renewable Energy Sources	0 tons	0 tons	0 tons	0 tons	0 tons	0 tons	0 tons	0 tons
Category 2 – Indirect / Purchased Energy / Electricity Consumption / Purchased Electricity	4.412 tons	0 tons	0 tons	0 tons	0 tons	0 tons	0 tons	4.412 tons
TOTAL	4.412 tons	0 tons	0 tons	0 tons	0 tons	0 tons	0 tons	4.412 tons

Category 3 (Indirect - Transportation) Emissions

Emissions (t CO ₂ -e)	CO ₂	CH ₄	N ₂ O	HFC	PFC	SF ₆	NF ₃	TOTAL
Category 3 – Indirect / Transportation / Upstream Transportation and Distribution	230.725 tons	0.004 tons	1.544 tons	0 tons	0 tons	0 tons	0 tons	232.274 tons

/ Land Transportation / Road Transportation / Light-Duty Trucks / Average (up to 3.5 tons) / Diesel								
Category 3 – Indirect / Transportation / Upstream Transportation and Distribution / Air Transportation / Cargo Flights	0.224 tons	0 tons	0.001 tons	0 tons	0 tons	0 tons	0 tons	0.226 tons
Category 3 – Indirect / Transportation / Employee Commuting / Land Transportation / Road Transportation / Minibuses / Midi-Buses / Buses / Shuttles	177.133 tons	0.065 tons	3.212 tons	0 tons	0 tons	0 tons	0 tons	180.41 tons
Category 3 – Indirect / Transportation / Employee Commuting / Land Transportation / Road Transportation / Minibuses / Midi-Buses / Buses / Coaches (Inter-City Buses)	137.473 tons	0.05 tons	2.493 tons	0 tons	0 tons	0 tons	0 tons	140.016 tons
Category 3 – Indirect / Transportation / Employee Commuting / Land Transportation / Road Transportation / Automobiles / By Market Segment / Lower Medium Class (C-Segment) / Diesel	4.149 tons	0 tons	0.05 tons	0 tons	0 tons	0 tons	0 tons	4.199 tons
Category 3 – Indirect / Transportation / Business Travel / Accommodation / Hotel Stays / Türkiye	4.012 tons	0 tons	0 tons	0 tons	0 tons	0 tons	0 tons	4.012 tons
Category 3 – Indirect / Transportation / Business Travel / Air Transportation / Commercial Flights / Economy Class	116.508 tons	0.011 tons	0.741 tons	0 tons	0 tons	0 tons	0 tons	117.26 tons
TOTAL	670.225 tons	0.13 tons	8.042 tons	0 tons	0 tons	0 tons	0 tons	678.397 tons

Category 4 (Indirect / Products Used by the Organization) Emissions

Emissions (t CO ₂ -e)	CO ₂	CH ₄	N ₂ O	HFC	PFC	SF ₆	NF ₃	TOTAL
Category 4 – Indirect / Products Used by the Organization / Capital Goods / Purchased Products / Purchased Goods / Institutional Furniture Manufacturing	73.8 tons	0 tons	0 tons	0 tons	0 tons	0 tons	0 tons	73.8 tons
Category 4 – Indirect / Products Used by the Organization / Capital Goods / Purchased Products / Purchased Goods / Major Household Appliance Manufacturing	27.52 tons	0 tons	0 tons	0 tons	0 tons	0 tons	0 tons	27.52 tons
Category 4 – Indirect / Products Used by the Organization / Capital Goods / Purchased Products / Purchased Goods / Computer Storage Device Manufacturing	10.192 tons	0 tons	0 tons	0 tons	0 tons	0 tons	0 tons	10.192 tons

Category 4 – Indirect / Products Used by the Organization / Capital Goods / Purchased Products / Purchased Goods / Electronic Computer Manufacturing	26.1 tons	0 tons	0 tons	0 tons	0 tons	0 tons	0 tons	26.1 tons
Category 4 – Indirect / Products Used by the Organization / Purchased Goods and Services / Purchased Products / Purchased Services / Repair and Maintenance of Commercial and Industrial Machinery and Equipment (excluding Automotive and Electronics)	27.60 8 tons	0 tons	0 tons	0 tons	0 tons	0 tons	0 tons	27.608 tons
Category 4 – Indirect / Products Used by the Organization / Purchased Goods and Services / Purchased Products / Purchased Services / Catering Services	170.3 43 tons	0 tons	0 tons	0 tons	0 tons	0 tons	0 tons	170.343 tons
Category 4 – Indirect / Products Used by the Organization / Purchased Goods and Services / Purchased Products / Purchased Services / Offices of All Other Miscellaneous Health Practitioners	49.98 tons	0 tons	0 tons	0 tons	0 tons	0 tons	0 tons	49.98 tons
Category 4 – Indirect / Products Used by the Organization / Purchased Goods and Services / Purchased Products / Purchased Services / Cleaning Services	295.0 23 tons	0 tons	0 tons	0 tons	0 tons	0 tons	0 tons	295.023 tons
Category 4 – Indirect / Products Used by the Organization / Purchased Goods and Services / Purchased Products / Purchased Services / Security Guards and Patrol Services	83.21 8 tons	0 tons	0 tons	0 tons	0 tons	0 tons	0 tons	83.218 tons
Category 4 – Indirect / Products Used by the Organization / Purchased Goods and Services / Purchased Products / Purchased Services / Other Advertising-Related Services	21.59 tons	0 tons	0 tons	0 tons	0 tons	0 tons	0 tons	21.59 tons
Category 4 – Indirect / Products Used by the Organization / Purchased Goods and Services / Purchased Products / Purchased Services / Administrative Management and General Management Consulting Services	214.5 tons	0 tons	0 tons	0 tons	0 tons	0 tons	0 tons	214.5 tons
Category 4 – Indirect / Products Used by the Organization / Purchased Goods and Services / Purchased Products / Purchased Services / Insurance Agencies and Brokerage Services	0.406 tons	0 tons	0 tons	0 tons	0 tons	0 tons	0 tons	0.406 tons
Category 4 – Indirect / Products Used by the Organization / Purchased Goods and Services / Purchased Products / Purchased Services / Transportation Equipment and Supplies Merchant Wholesalers (excluding Motor Vehicles)	125.2 86 tons	0 tons	0 tons	0 tons	0 tons	0 tons	0 tons	125.286 tons
Category 4 – Indirect / Products Used by the Organization / Purchased Goods and Services / Purchased Products / Purchased Goods / Institutional Furniture Manufacturing	33.91 2 tons	0 tons	0 tons	0 tons	0 tons	0 tons	0 tons	33.912 tons
Category 4 – Indirect / Products Used by the Organization / Purchased Goods and Services / Purchased Products / Purchased Goods / Manufacturing of All Other Miscellaneous Electrical Equipment and Components	14.59 2 tons	0 tons	0 tons	0 tons	0 tons	0 tons	0 tons	14.592 tons
Category 4 – Indirect / Products Used by the Organization / Capital Goods / Purchased Products / Purchased Goods / Major Household Appliance Manufacturing	24.57 2 tons	0 tons	0 tons	0 tons	0 tons	0 tons	0 tons	24.572 tons
Category 4 – Indirect / Products Used by the Organization / Purchased Goods and Services / Purchased Products / Purchased Goods / Computer Storage Device Manufacturing	21.97 8 tons	0 tons	0 tons	0 tons	0 tons	0 tons	0 tons	21.978 tons

Category 4 – Indirect / Products Used by the Organization / Purchased Goods and Services / Purchased Products / Purchased Goods / Stationery Product Manufacturing	2.072 tons	0 tons	0 tons	0 tons	0 tons	0 tons	0 tons	2.072 tons
Category 4 – Indirect / Products Used by the Organization / Purchased Goods and Services / Material Use / Organic / Fertilizer Produced from Garden Waste / Primary Material Production	0.618 tons	0 tons	0 tons	0 tons	0 tons	0 tons	0 tons	0.618 tons
Category 4 – Indirect / Products Used by the Organization / Water / Bottled Water	0.04 tons	0 tons	0 tons	0 tons	0 tons	0 tons	0 tons	0.04 tons
Category 4 – Indirect / Products Used by the Organization / Water / Municipal Water Supply	49.13 tons	0 tons	0 tons	0 tons	0 tons	0 tons	0 tons	49.13 tons
Category 4 – Indirect / Products Used by the Organization / Operational Waste / Wastewater	39.497 tons	0 tons	0 tons	0 tons	0 tons	0 tons	0 tons	39.497 tons
Category 4 – Indirect / Products Used by the Organization / Operational Waste / Paper & Cardboard / Mixed / Closed Loop Recycling	0.271 tons	0 tons	0 tons	0 tons	0 tons	0 tons	0 tons	0.271 tons
Category 4 – Indirect / Products Used by the Organization / Operational Waste / Plastic / Average Plastic / Closed Loop Recycling	0.019 tons	0 tons	0 tons	0 tons	0 tons	0 tons	0 tons	0.019 tons
Category 4 – Indirect / Products Used by the Organization / Operational Waste / Metal / Scrap Metal / Closed Loop Recycling	0.071 tons	0 tons	0 tons	0 tons	0 tons	0 tons	0 tons	0.071 tons
Category 4 – Indirect / Products Used by the Organization / Operational Waste / Household and Industrial Waste / Commercial and Industrial Waste / Incineration	0.001 tons	0 tons	0 tons	0 tons	0 tons	0 tons	0 tons	0.001 tons
Category 4 – Indirect / Products Used by the Organization / Operational Waste / Household and Industrial Waste / Commercial and Industrial Waste / Closed Loop Recycling	0.159 tons	0 tons	0 tons	0 tons	0 tons	0 tons	0 tons	0.159 tons
Category 4 – Indirect / Products Used by the Organization / Operational Waste / Household and Industrial Waste / Organic: Garden Waste / Composting	0.153 tons	0 tons	0 tons	0 tons	0 tons	0 tons	0 tons	0.153 tons
Category 4 – Indirect / Products Used by the Organization / Operational Waste / Household and Industrial Waste / Urban Waste / Landfilling	22.326 tons	0 tons	0 tons	0 tons	0 tons	0 tons	0 tons	22.326 tons
Category 4 – Indirect / Products Used by the Organization / Operational Waste / Household and Industrial Waste / Urban Waste / Closed Loop Recycling	26.634 tons	0 tons	0 tons	0 tons	0 tons	0 tons	0 tons	26.634 tons
TOTAL	1,361.608 tons	0 tons	0 tons	0 tons	0 tons	0 tons	0 tons	1,361.608 tons

Category 5 (Indirect / Use of Products from the Organization) Emissions

Emissions (t CO₂-e)	CO₂	CH₄	N₂O	HFC	PFC	SF₆	NF₃	TOTAL
Category 5 – Indirect / Use of Products from the Organization / Downstream Leased Assets / Fuel Emissions / Natural Gas	86.07 tons	0.043 tons	0.042 tons	0 tons	0 tons	0 tons	0 tons	86.155 tons
Category 5 – Indirect / Use of Products from the Organization / Downstream Leased Assets / Electricity Emissions	1,559.429 tons	0 tons	0 tons	0 tons	0 tons	0 tons	0 tons	1,559.429 tons
TOTAL	1,645.499 tons	0.043 tons	0.042 tons	0 tons	0 tons	0 tons	0 tons	1,645.584 tons